



# **Matrix People Mobility Solution for Retail**

*Right People in Right Place at Right Time*

EXPECT MORE.

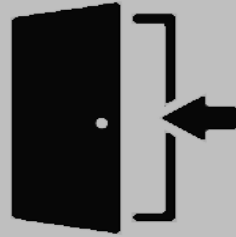


**MATRIX PEOPLE MOBILITY SOLUTION FOR RETAIL**

# Pain Areas



Managing Employees'  
Attendance



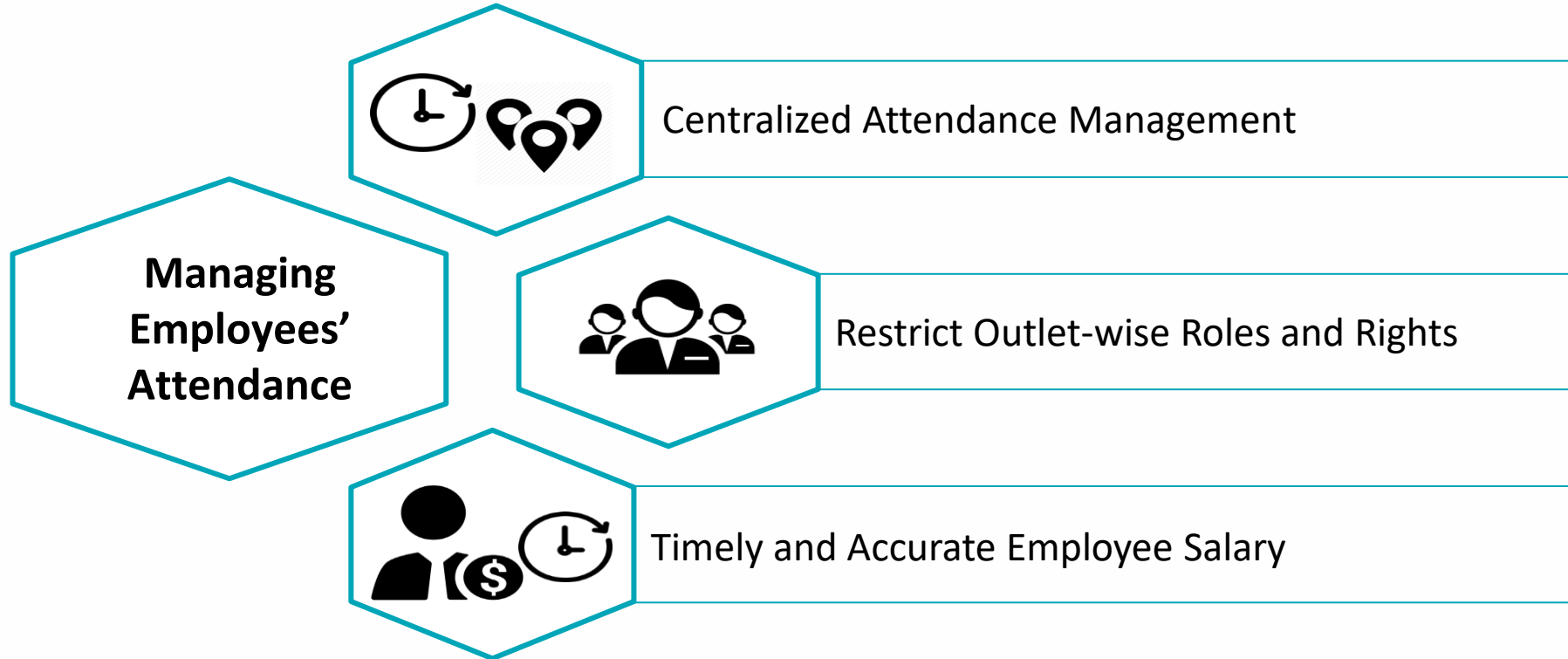
Security of Manpower  
and Assets

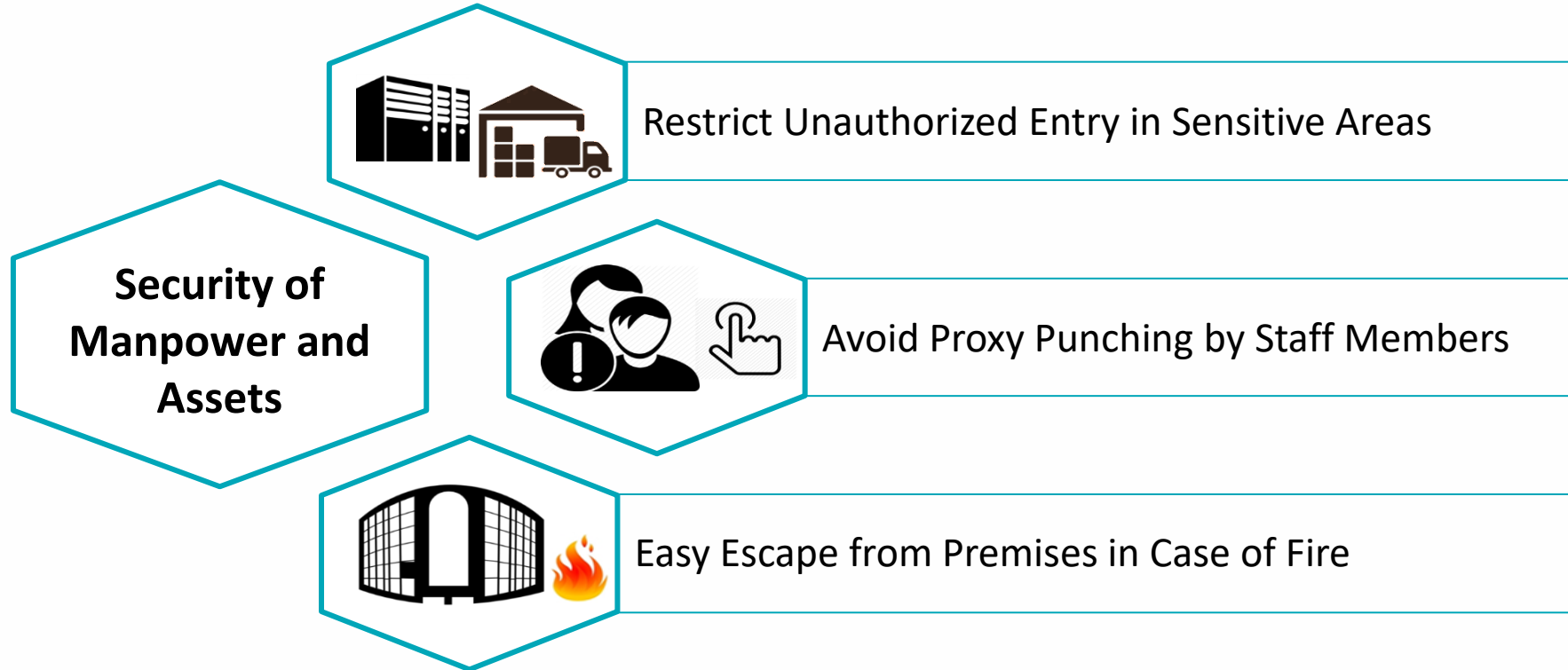


Improving Customer  
Satisfaction

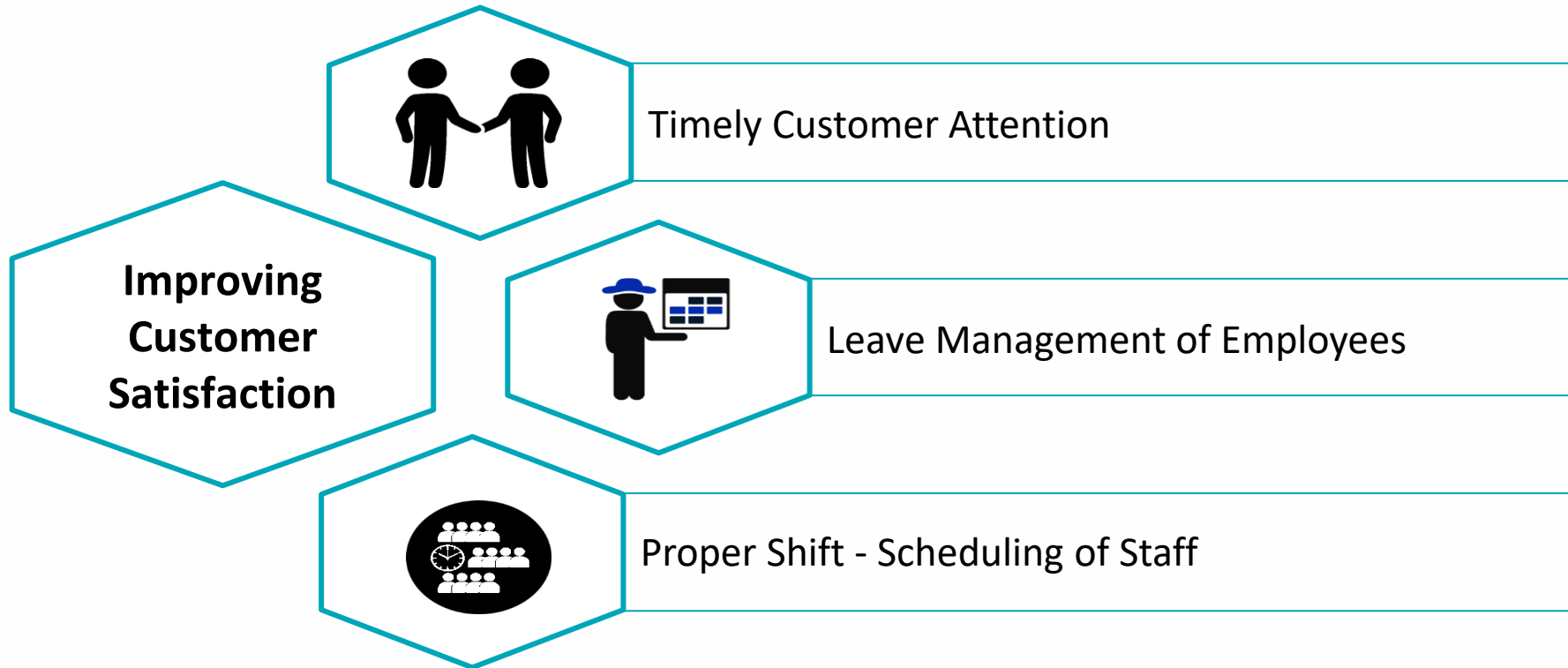


# Pain Areas





# Pain Areas



# Solutions

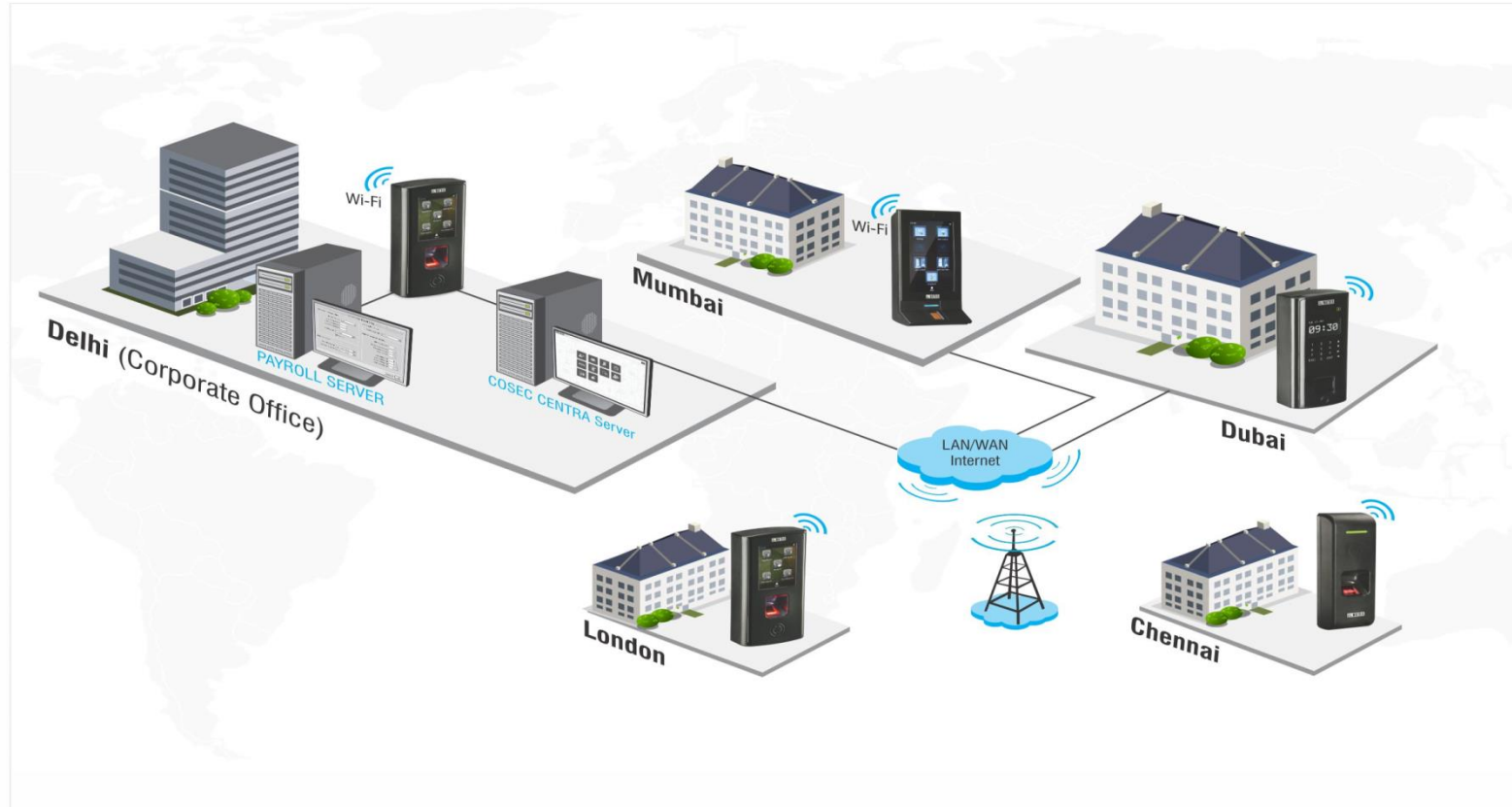


**Managing  
Employees'  
Attendance**

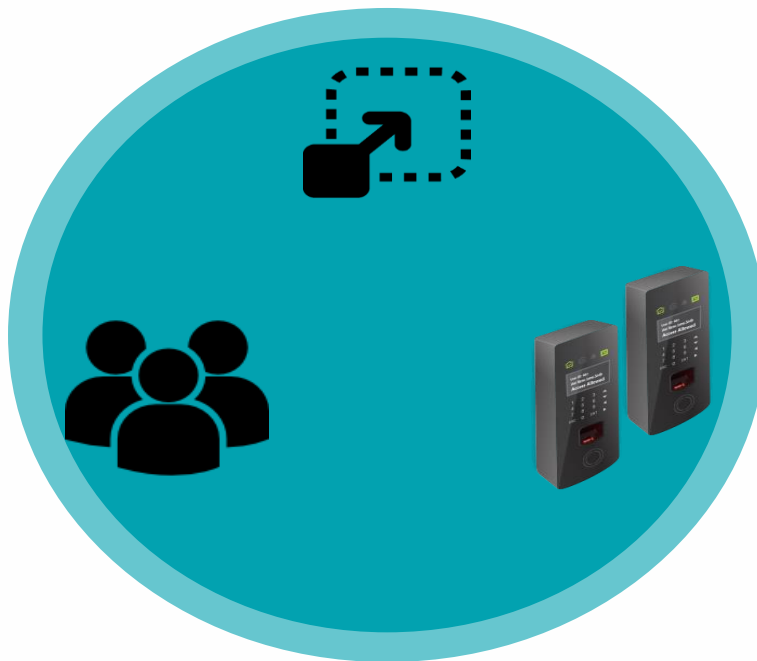


Centralized Attendance Management

# Multi-locations' Attendance Management



# Scalable Architecture



Expand Up to 65,000 Devices and 1 Million Users

# Real-time Data Transfer to Server

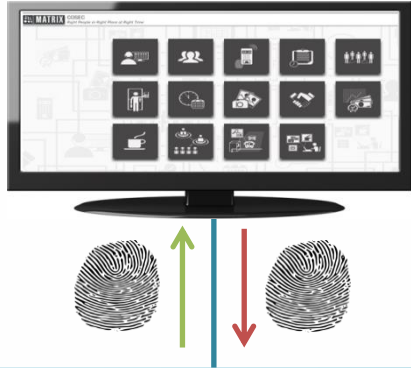


Data Transfer from Device to Server in **<1 Sec**

**Auto Push** Technology

No Manual Download Required

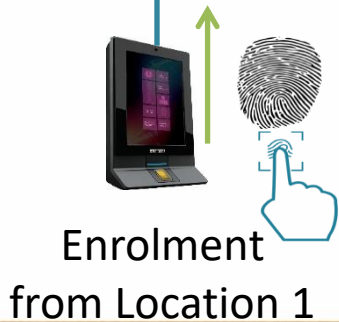
# Automatic Template Distribution



COSEC CENTRA Server

No Need to Enrol again on other Locations

LAN/WAN/3G



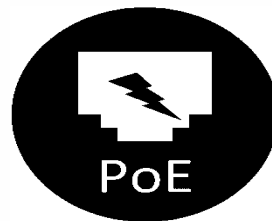
# Multiple Connectivity



3G/4G



Wi-Fi



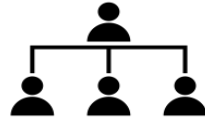
Ethernet/  
PoE



USB



**Managing  
Employees'  
Attendance**



Restrict Outlet-wise Roles and Rights

- Define Organizational Hierarchy

Organization

Designation

Branch

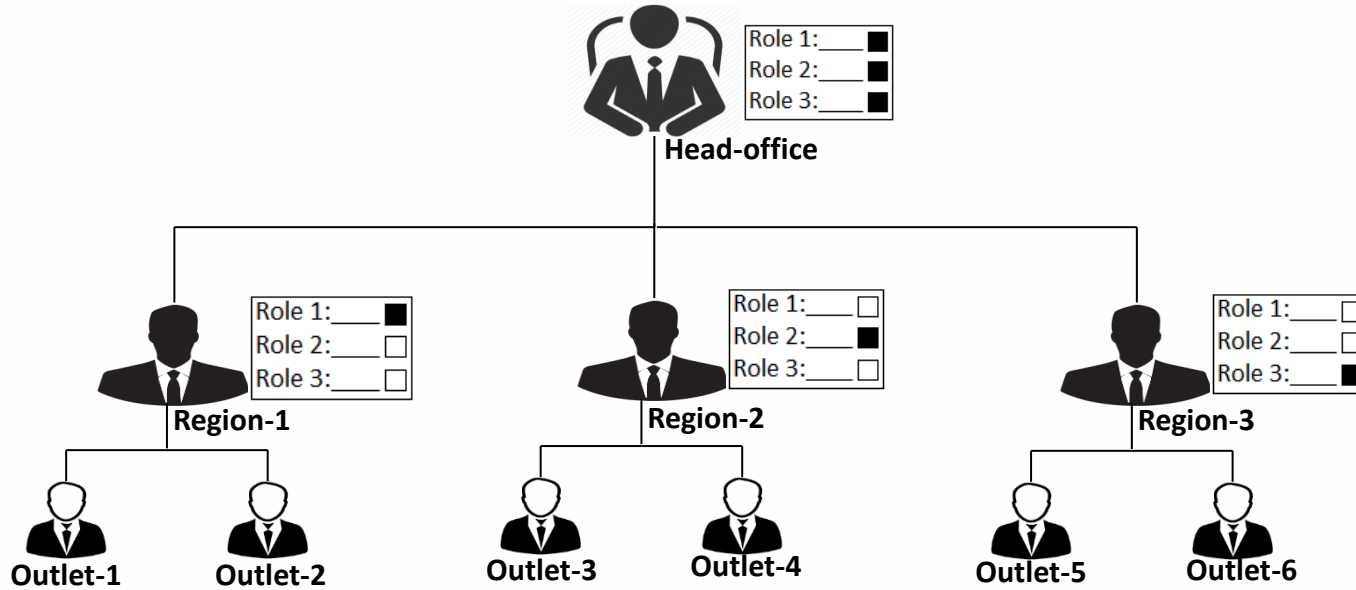
Section

Grade

Department

Category

# Manage Login Roles and Rights



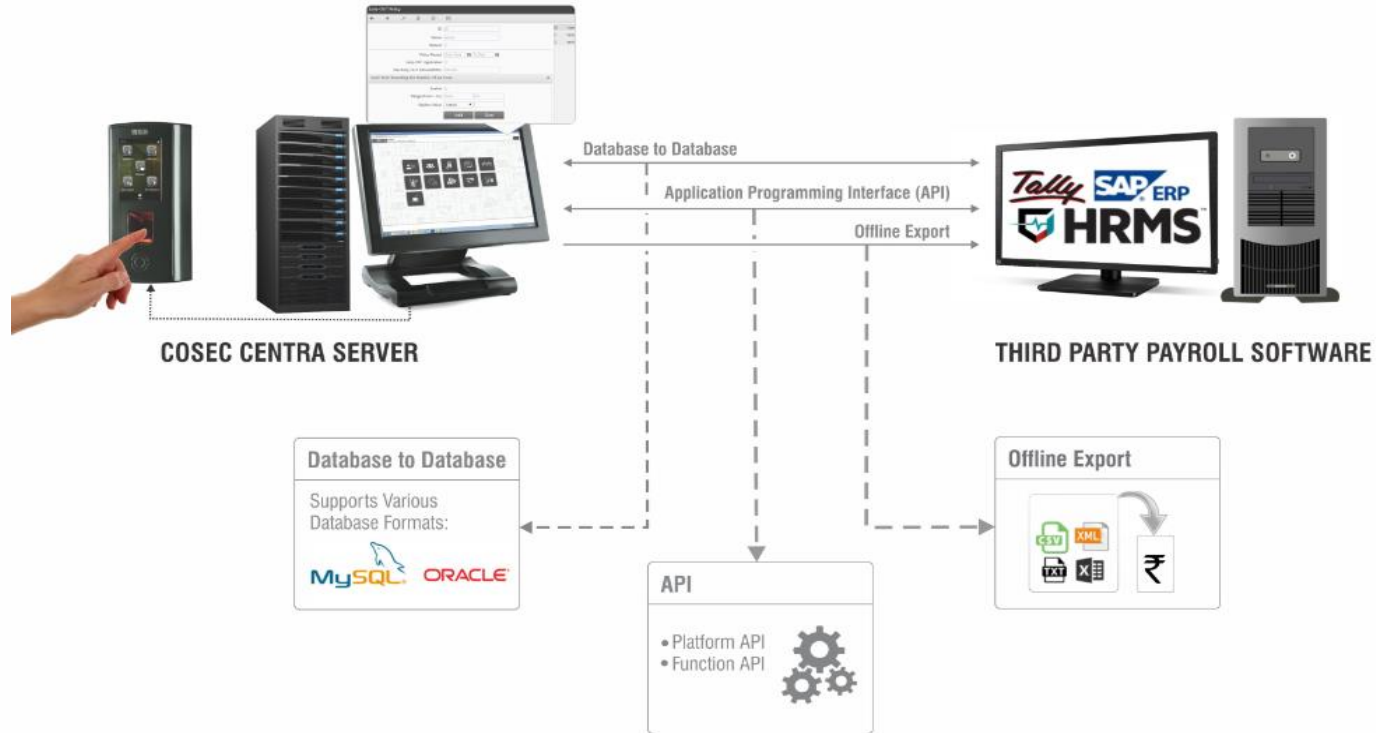
Create Multiple Login Roles and Assign Rights to Concerned Personnel

**Managing  
Employees'  
Attendance**



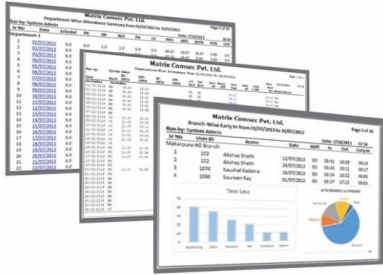
Timely and Accurate Employee Salary

# Third Party Payroll Integration

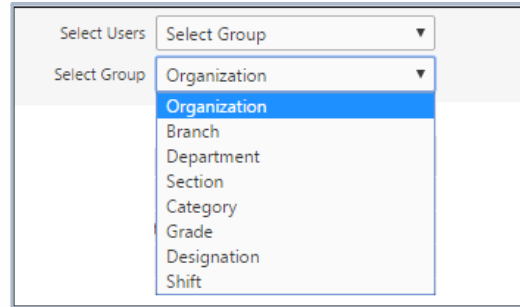


Seamless Payroll Integration for Faster Salary Payments

# Reports & Charts for Quick Decision Making



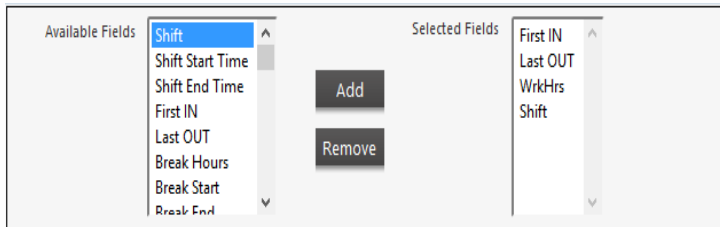
200+ Reports and Charts



Apply Various Filters to Generate Specific Reports



File Formats



Customized Report Template



Reports on Email at Scheduled Time



**Security of  
Manpower and  
Assets**

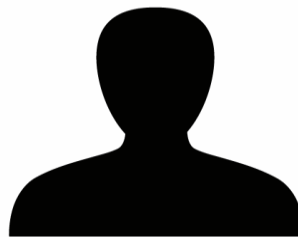


Restrict Unauthorized Entry in Sensitive  
Areas

# Time-Zone-User based Access



User Access only During  
Particular Time Period



User Access to Limited  
Areas



User Access for  
Particular Zone

# Biometric Access Control



Palm Vein



Fingerprint



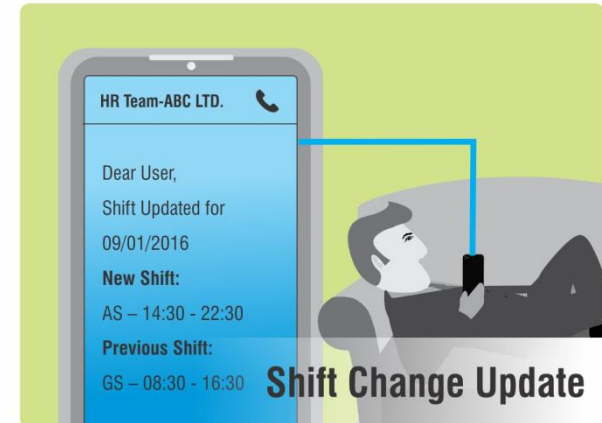
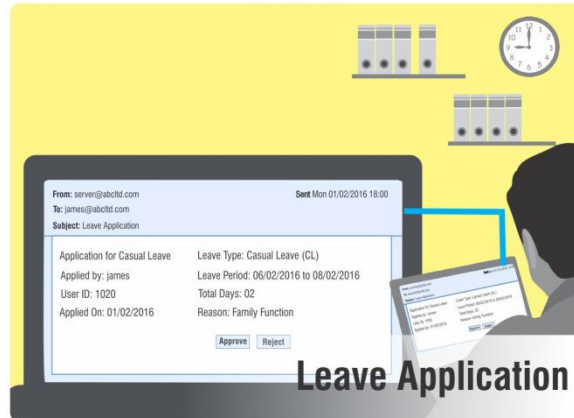
RFID Card



PIN

Multiple Credential Support

# Real-time SMS & Email Notifications



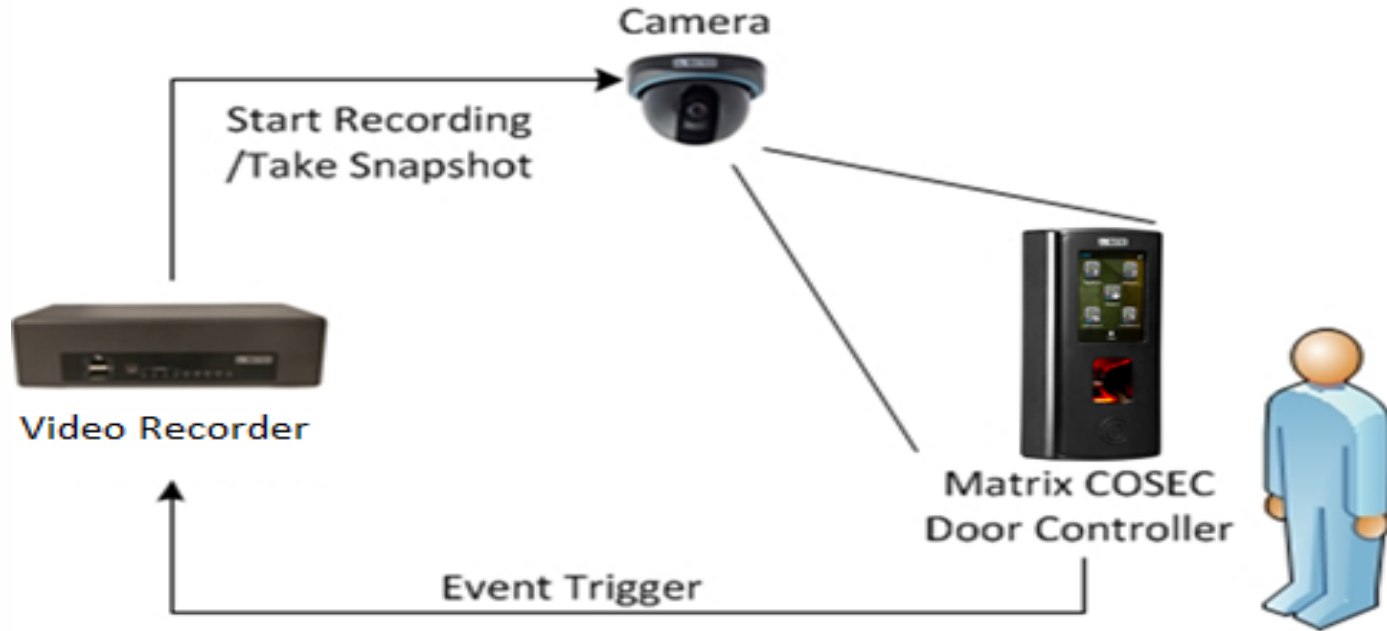
- Notify Employee/Reporting Officer on Exceptions
- Alerts on Missed Punches, Attendance-Leave Status, Access Control Mishaps

**Security of  
Manpower and  
Assets**



Avoid Proxy Punching by Staff Members

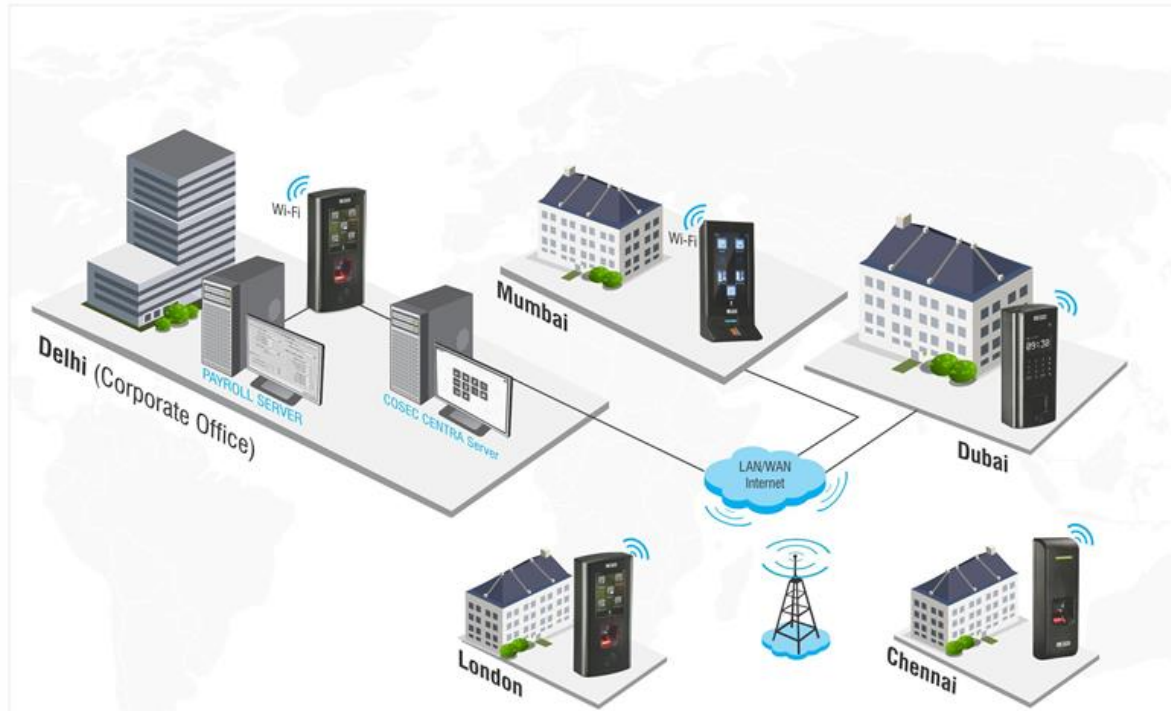
# Integration with Video Surveillance Solution



- Capture User's Snap on Punch



# Centralized Monitoring



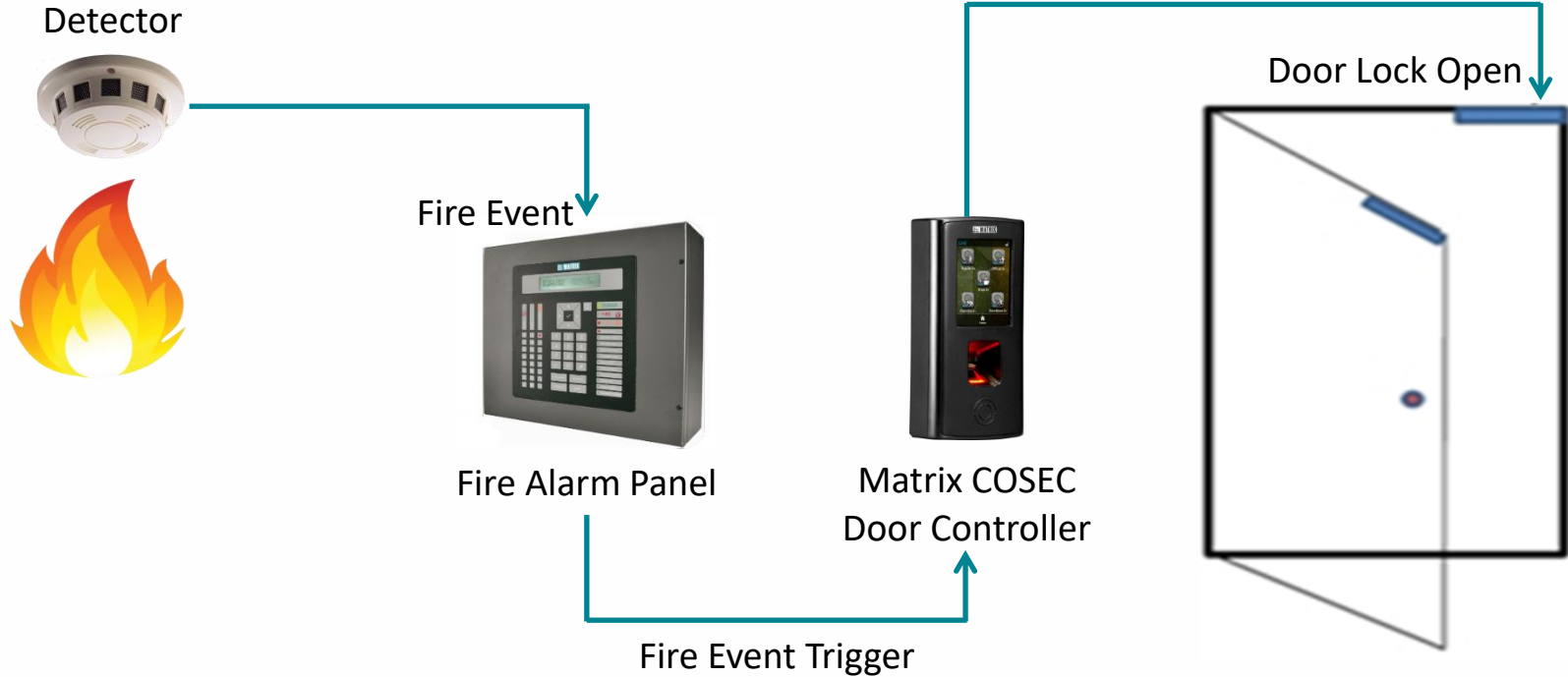
- Fully Web based Software with only one Public IP
- Monitor Status of each Door connected in Network

**Security of  
Manpower and  
Assets**



Easy Escape from Premises in Case of Fire

# Easy Access from Premises in case of Fire



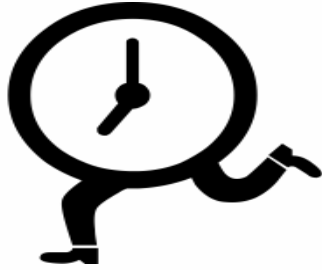
- On catching Fire, the Door of Premises will Open Automatically for Easy Escape.

**Increase Customer  
Satisfaction**



Timely Customer Attention

# Comprehensive Attendance Policies



Late IN/OUT



Early IN/OUT



Overtime



Absenteeism Policies



C-OFF Policies



Break Policies

# GPS based Attendance Tracking

**User Events**

Date: 01/09/2015 to 08/09/2015

**Attendance Events (5)**

User ID	User Name
2786	ARUN TRIUMPH TEC
2786	ARUN TRIUMPH TEC
65247	Vishal
M1	Mahmoud
M1	Mahmoud

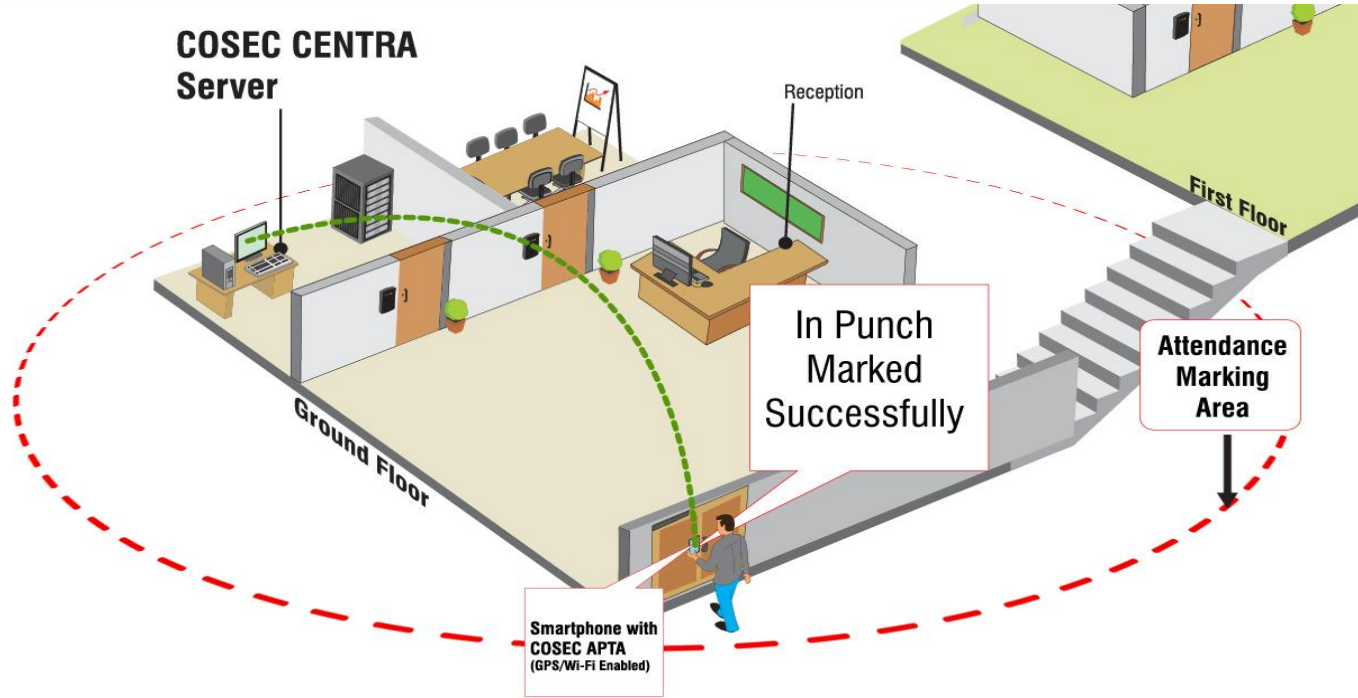
**Location On Google Maps**

Latitude: +22.2544  
Longitude: +73.1831

Map data ©2015 Google

- GPS based Manual Attendance Marking by Field Employees

# Automatic Attendance Marking



- On Entering/Exiting any Location Predefined in System, Attendance gets Marked Automatically through Wi-Fi / GPS

# Live Tracker



Shift View				
ID	Name	Scheduled	Not Reported	Reported
+ 10	GENERAL 9 30 TO 7 00	0	0	0
+ 11	General Shift	3	3	0
+ G5	MORNING 0730 TO 1630	29	21	8
+ GN	General New	42	42	0
+ 23	Fac General Shift	188	44	144
+ CN	Consultant New	3	3	0
+ GS	HO RnD General Shift	458	118	340
Total		742	249	493

Shift View

Site View			
ID	Shift Name	Reported	Reported
10	GENERAL 9 30 TO...	0/0	424
11	General Shift	0/3	64
GN	General New	0/42	8
G5	MORNING 0730 T...	8/29	
23	Fac General Shift	144/188	
CN	Consultant New	0/3	
GS	HO RnD General S...	340/458	
Total		496/742	496

Site View

Who's IN View		
ID	Site Name	Who's IN
1	Site-1	458
2	HO	54
3	RnD	7
Total		519

Who's IN View

- Shows Live Head Count of Users according to Shift, Site or Who's IN



**Increase Customer  
Satisfaction**



Leave Management of Employees

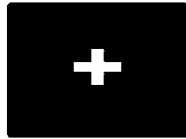
# Leave Policies



Leave Types



Tour Policies



Accrual Policies

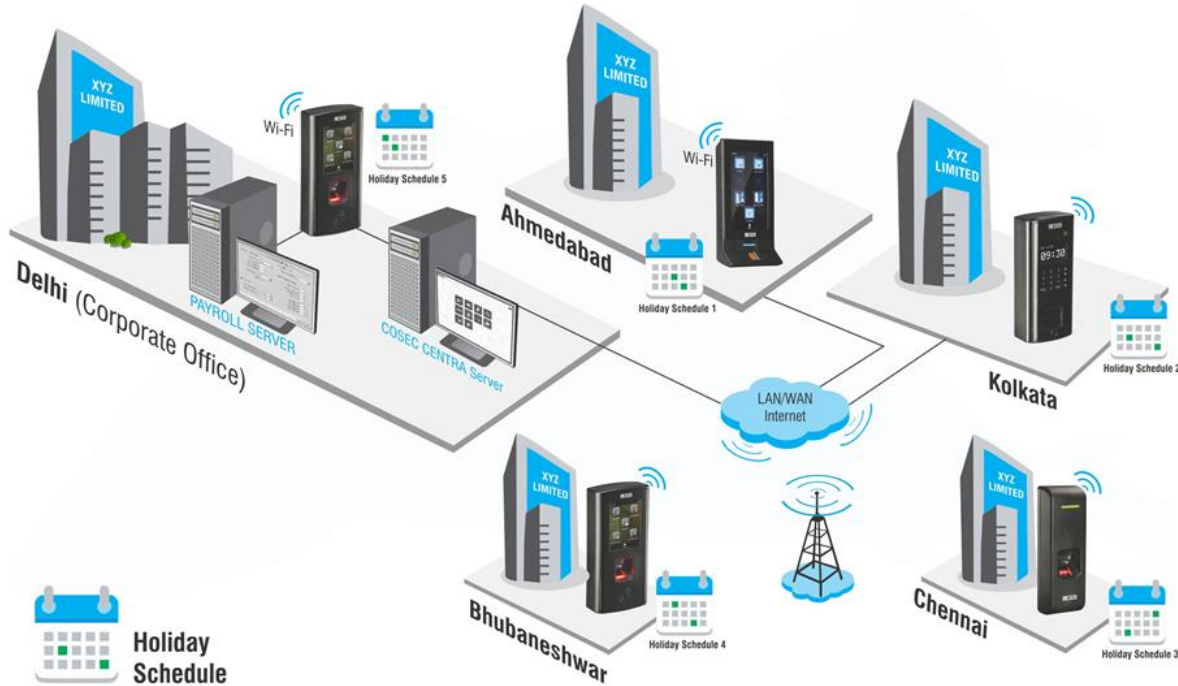


Leave Application  
and Approval



Leave Encashment

# Region-wise Holiday Management



- Configure up to 30 Holiday Schedules with 32 Holidays in each

# Attendance and Leave Management Portal



## Employee Self Service Portal (ESS)

### Employees



- View Attendance/Leave/Shift Details
- Mark Attendance
- Apply for Leave/Tour
- Apply for Attendance Correction
- Edit Personal Information

### Reporting Managers

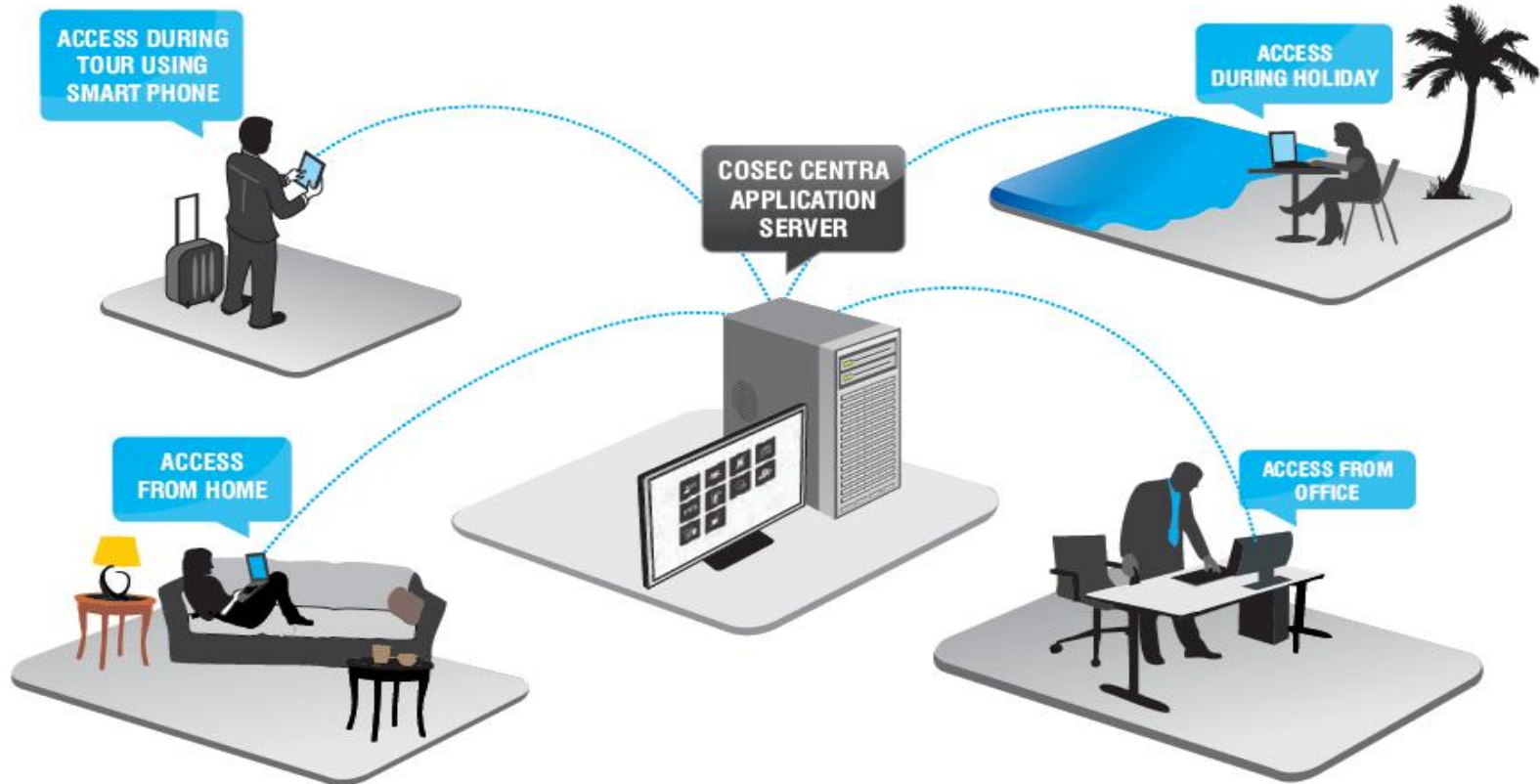


- Approve Leave/Tour Request
- Approve Attendance Correction
- Authorize Attendance
- View Team Attendance

ESS is available on



# Access ESS Portal from Anywhere



**Increase Customer  
Satisfaction**



Proper Shift-Scheduling of Employees

# Shifts and Schedules

### Resolves Date Rollover Issues

FEBRUARY 3, 2016 19:30 HRS.  
 USER ID: 100B5  
 USER NAME: STEVE CLAY  
**IN Punch**

FEBRUARY 4, 2016 4:30 HRS.  
 USER ID: 100B5  
 USER NAME: STEVE CLAY  
**OUT Punch**

**ATTENDANCE CONSIDERED**  
 FEBRUARY 3, 2016

### Auto Shift Correction

FEBRUARY 4, 2016 13:00 HRS.  
 USER ID: 0B2  
 USER NAME: JAMES SMITH  
**IN Punch**

FEBRUARY 5, 2016 01:00 HRS.  
 USER ID: 0B2  
 USER NAME: JAMES SMITH  
**OUT Punch**

Shift	Timing	Over-Time
Morning	06:00 to 14:00	
<b>Afternoon</b>	<b>14:00 to 23:00</b>	<b>00:00 hrs</b>
Night	23:00 to 06:00	

**SHIFT CONSIDERED**  
**Afternoon Shift**

### Manage Continuous Shifts' Attendance

FEBRUARY 4, 2016 06:00 HRS.  
 USER ID: 0B6  
 USER NAME: JOHN SMITH  
**IN Punch**

FEBRUARY 4, 2016 23:00 HRS.  
 USER ID: 0B6  
 USER NAME: JOHN SMITH  
**OUT Punch**

Shift	Timing	Over-Time
<b>Morning</b>	<b>06:00 to 14:00</b>	<b>08:00 hrs</b>
Afternoon	14:00 to 23:00	
Night	23:00 to 06:00	

**SHIFT CONSIDERED**  
**Morning Shift + Over-Time**

- Create up to 999 Shift Schedules with Unlimited Shifts



# Benefits with Matrix



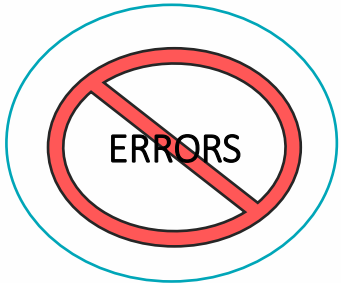
Improves Productivity



Automates Attendance  
Process



Increases Security



Reduces Payroll  
Errors



Reduces Cost



Leverages Peace of Mind

# Clientele List



 Departmental Store Chain	India	 <b>The Chennai Silks</b> Textile Retailer	India
 Departmental Store Chain	India	 <b>Z SQUARE</b> Shopping Mall	India
 Apparel Store Chain	India	 Apparels	Dubai, UAE
 Hamburger fast food restaurant chain	India	 <b>Khimji Ramdas</b> • SINCE 1870 • Multibrands 'Wholesale'	Oman
 Auto Dealer - Toyota Cars	India	 Shopping Mall	India

# Case Reference

# Matrix Time-Attendance at Burger King, Mumbai



## Applications:

- Managing Time-Attendance of 1000+ Employees in Outlets at Mumbai

## Technology:

- Fingerprint Reader (with Optical sensor)

## Matrix Offering:

- Users: 1000+
- Devices: 30+
- Locations: 30+ Outlets (in Mumbai)

## Benefits:

- Improved productivity with accurate attendance calculation
- Automated payroll tracking and calculations save time of HR personnel

## Solution Offered:

- Web based time-attendance solution for 30+ locations with biometric fingerprint based terminals
- Flexible attendance marking option for calculating accurate working hours in a day and payroll tracking
- Monthly attendance reports with overtime
- Direct integration with HRM software

# Matrix Hardware

# Matrix COSEC Product Range



VEGA Series



DOOR Series



PATH Series



ARC Series

# Matrix COSEC Solutions



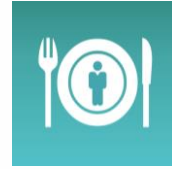
Time-Attendance



Access Control



Visitor Management



Cafeteria  
Management



Contract Workers  
Management



Roster  
Management



Job Processing  
and Costing



Employee Self-  
Service



Vehicle Access  
Management



Field Visit  
Management

# About Matrix



1991

We Established

60+

Products  
Telecom & Security

40+

Countries  
we  
Present

500+

No. of  
Channel Partners

400+

No. of  
Employees

25+

Awards and  
Achievements



R&D Center



Corporate Office

[www.MatrixSecuSol.com](http://www.MatrixSecuSol.com)



Manufacturing Unit



For Further Information -



Email	More@MatrixComSec.com
Contact No	+91 265 2630555
Website	www.MatrixSecuSol.com
Address	394-GIDC Makarpura, Vadodara-390010, Gujarat, India

We put  
**more**  
**in the box**

so your  
business  
can think  
**more**  
**out of**  
**the box.**



Thank You.