



# Enhancing Security with Matrix Video Surveillance Systems

# Importance of Video Surveillance



Centralized  
Surveillance



Safety of  
People



Safety of  
Assets



Enhanced  
Productivity



Crime  
Prevention



Evidence  
Gathering



Ensure  
Compliance



Proactive  
Surveillance



Peace of  
Mind

# Video Surveillance Essentials



Cameras: Primary Component to Capture Video Footage



Recording Devices: to store video footage for retrieval and analysis



Video Management Software (VMS): to manage and control the video surveillance system



Real-time Alerts and updates

# Matrix Video Surveillance Offering



IP Cameras – Bullet, Dome, Turret, Turret All Color, Ruggedized, and PTZ



Network Video Recorders – NVRXS, NVRX, NVRXCTS



SATATYA SAMAS Video Management System



SATATYA Sight / Vision

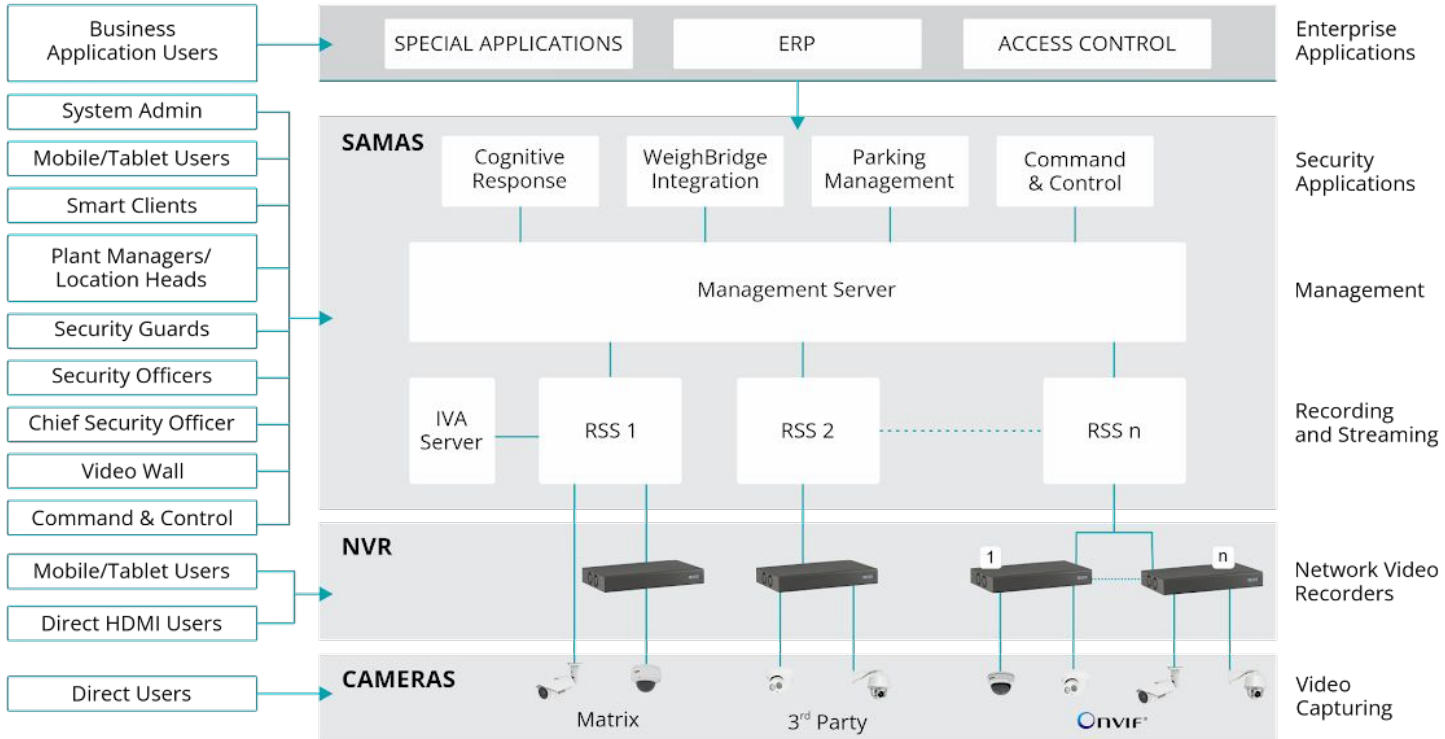
# Matrix SATATYA IP Video Surveillance



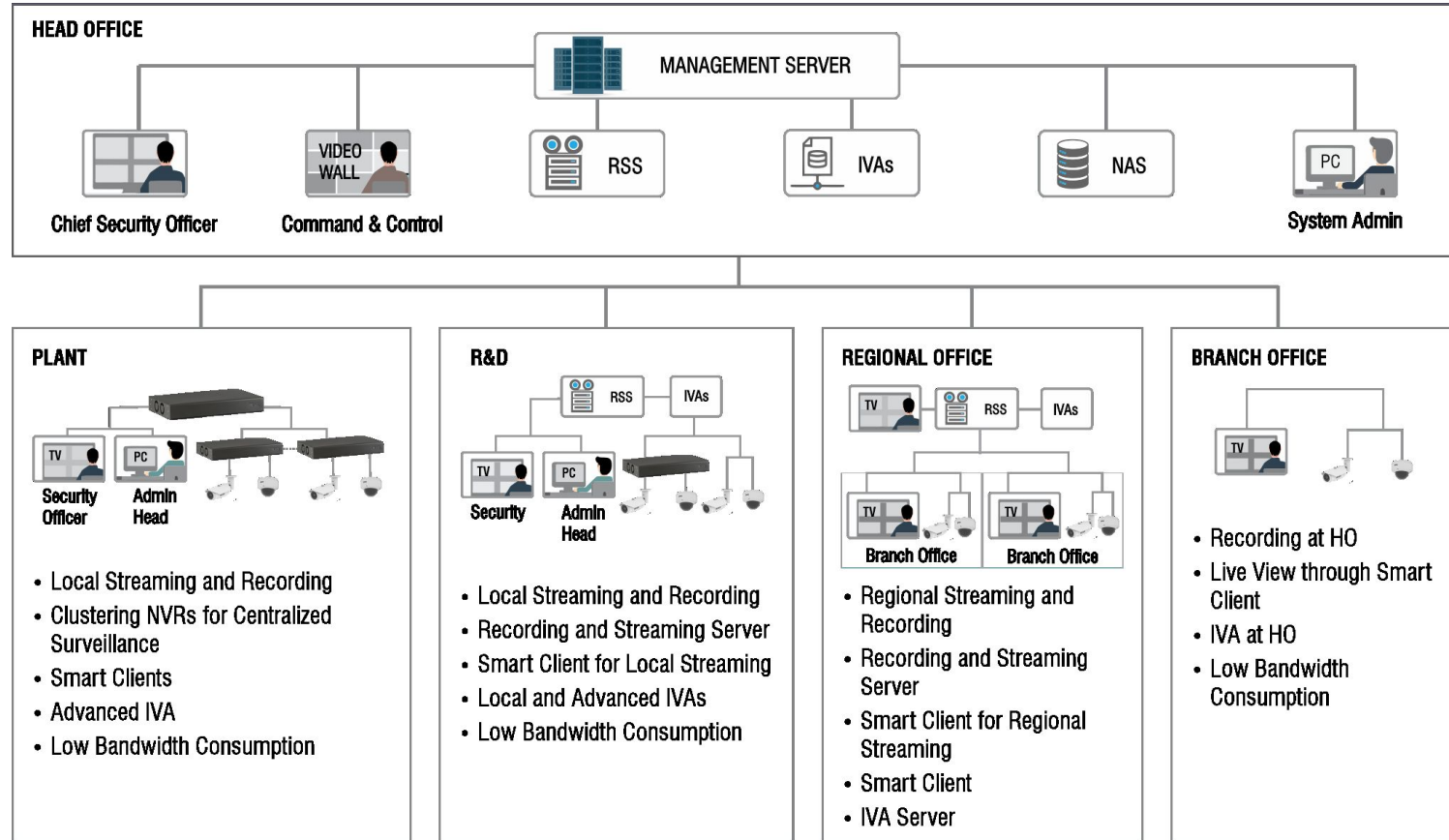
**IP Cameras**  
**Network Video Recorders**

**Enterprise Network Video Recorders**  
**Video Management Software**  
**Mobile Applications**

# SATATYA ARCHITECTURE



# SATATYA DEPLOYMENT



A person with short dark hair, wearing a white shirt and glasses, is seen from behind, looking at a large array of computer monitors. The monitors display various IP camera feeds, showing industrial or outdoor scenes. The overall scene is dimly lit, with a blueish tint, suggesting a control room or surveillance center. The text 'SATATYA IP CAMERAS' is overlaid in the center of the image.

# SATATYA IP CAMERAS



# SATATYA IP CAMERAS



**PROJECT SERIES  
BULLET**  
2MP/5MP/8MP

**TURRET SERIES**  
2MP/5MP



**PROJECT SERIES  
DOME**  
2MP/5MP/8MP

**PTZ CAMERA**  
5MP  
42x

**PTZ CAMERA**  
2MP  
33x

**PTZ CAMERA**  
2MP 25x

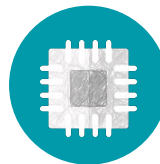
**DISTRIBUTION  
SERIES DOME**  
2MP/5MP/8MP

**DISTRIBUTION  
SERIES BULLET**  
2MP/5MP/8MP

**Ruggedized  
Camera**  
2MP/5MP

# Camera Key Features

## Superior Image Quality in Day/Night

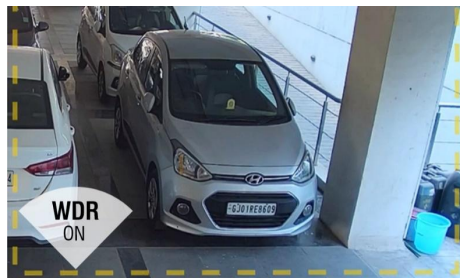


SONY STARVIS Sensors reduce noise, enhance Low-light Imaging Clarity

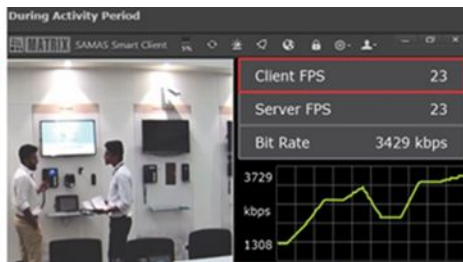
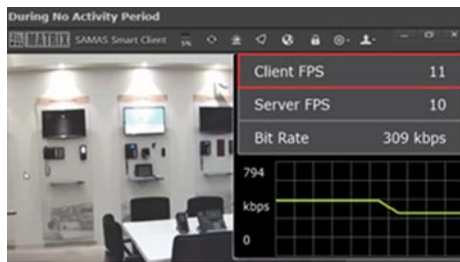


Clear Colored Imaging, even in Low Illumination Conditions (0.01 Lux)

# Camera Key Features



Adjusts exposure for balanced brightness with 120dB WDR precision



Cuts frame rate in idle times, saving up to 50% storage

# STQC Certified Cyber Secure Cameras



First Indian Company to Manufacture  
RDSO 6.0 Compliant Cameras



The Video in Transit Remains Secure  
With Transport Layer Security (TLS)



SD Card Data Encryption to Secure  
Data Stored



The system permits only signed  
firmware; and includes  
tamper-proofing, secure boot, and  
more

# KEY FEATURES



512 GB Edge  
Recording



Intelligent Video  
Analytics



Quad Stream  
Support



Adaptive  
Streaming



Alerts and  
Notification

# Project and Distribution Series

## Bullet/Dome Cameras



Varied Specifications - 2MP/5MP/8MP Resolutions, Flexible Lens Options, and Audio Capabilities



Project and Distribution Series Cameras: IR range 50m/30m, improved day/night coverage.



Project Series Cameras: UL and NEMA 4x Certification Ensuring Reliable Surveillance



Intelligent Video Analytic Features for Proactive Surveillance

# TURRET SERIES

## IP CAMERA



Ball and Socket Design: Manual Rotation to Capture Images from Different Angles



External Reset Switch for Ease of Use and Maintenance



Sturdy ADI Casing Makes them Impact-resistant and Vandal Proof and the Unique Chambered Design Cuts IR Glare



Recently Launched All Color Variants for Colored Images, Day and Night

# PTZ SERIES IP CAMERAS



2MP Camera – 25x, 33x Optical Zoom;  
5MP Camera – 42x Optical Zoom



Auto Patrolling – Up to 500 Presets, 8  
Auto Scan



Revolutionary Night Performance with  
IR Range of 300m



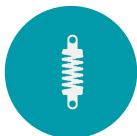
Privacy Masking of up to 24 regions  
from Camera View



# RUGGEDIZED IP CAMERAS



Available in 2MP and 5MP Variants



Rugged Design Minimizes Impacts, Shocks, and Vibrations, Best Suited for Transport Industry



Electronic Image Stabilization Combats Motion-induced Blurring and Give Sharp Images even When in Motion



Reliable Functioning in Extreme Conditions – Dust, Humidity, Snow, Heat, Power Fluctuations



# SATATYA NETWORK VIDEO RECORDER

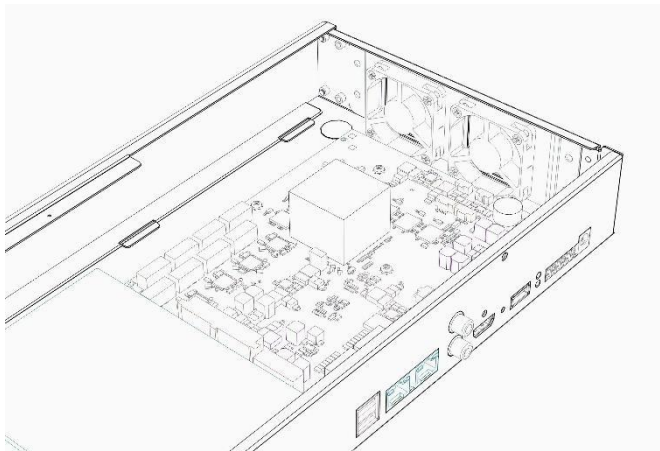
# SATATYA NETWORK VIDEO RECORDERS



**Extreme Series  
Network Video Recorders**  
8/16/32/64/96 Channel Variants



**Extreme Series  
Network Video Recorders XS**  
4/8/16 Channel Variants



# NVR KEY FEATURES

## Clustering



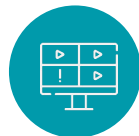
Links up to 20 NVRs Using a Master and Slave Configuration



Monitors 1000+ Cameras from a Central Location



Saves Software and Server Cost



Ideal Solution for SMEs, Railways, Airports, and many more

# NVR KEY FEATURES



12MP  
Camera  
Recording  
Capacity



4K Decoding  
Capacity



Up to 1GBPS  
Throughput\*



Interoperability



Database- level  
integration with  
Matrix Access  
Control

\*Variant specific; refer datasheet

# NVR KEY FEATURES



Alerts and  
Notifications



0/1/5/10 RAID  
Support\*



Calling from  
Mobile



Camera-wise  
Recording  
Retention



Adaptive  
Recording

\*Variant specific; refer datasheet

# Matrix Network Video Recorders Extreme



NVR variants: 8/16/32/64/96 channels for diverse surveillance requirements



SATA ports: Support 10TB storage (8/16/32/64 ch); 144TB (96 ch)



Throughput: 360/512 Mbps, 1Gbps for Smooth Streaming



RAID Support 0,1,5,10 (Variant Specific; Refer Datasheet)

# NVRXS KEY FEATURES



Fan less and Ventless Design for Silent Operations



4/8/16 Channel Support, 1 SATA Port HDD Support (10TB)



360 Mbps Throughput Capacity



Single Disk RAID Support





# SATATYA ENTERPRISE NETWORK VIDEO RECORDER

# ENVR KEY FEATURES



Enterprise-class Server-based Video Surveillance Solution with Inbuilt Video Management Software



Highly Scalable and Flexible to Integrate with Various Open Platforms



No Need to Invest Separately in VMS, Servers, and NVRs



Redundancy Support – Power, Network, Storage, Recording and Streaming

# ENVR KEY FEATURES



H.265 Video Compression Technology to Optimize Storage



3 Level Video Grooming - Primary and Two Levels of Backup and Archive



Hot Swappable Hard Disk Drives for Easy Maintenance with Zero Down Time



Data Secure Surveillance Compliant with OWASP

# KEY FEATURES ENVIR



256 Channel



144TB Storage



12MP Camera  
Recording



Interoperability



1GBPS  
Throughput



Streaming  
Support up  
to 3GBPS



Decoding  
Capacity



Integration



# SATATYA SAMAS VIDEO MANAGEMENT SYSTEM

# SAMAS BUILDING BLOCKS

## Management Server

- System Admin Assigns Users Roles-Rights
- Devices Management (RSS, NVR, Camera)
- Data Management and Integration

## System Admin Client

- Users and Device Management
- Storage and Backup
- System Alerts and Maintenance

## Mobile Client

- Mobile Application
- Live View
- Playback

## Recording and Streaming Server (RSS)

- Video Streams from Cameras and NVRs
- Storage, Backup, Archiving
- Live Streaming and IVA Integration

## Smart Client

- Live View, Playback, and Investigation
- Events, Alerts, and Pop-ups
- Reports and Analytics

## Media Client

- Transient Users without Log-in Rights
- Video Access

# SAMAS

## KEY FEATURES

### Centralized Monitoring and Control



- Monitoring Multiple Locations Centrally
- Mapped to Organization Structure and Hierarchy
- Quick Response Time
- Reduced Security Lapses

### Scalable to Meet Future Requirements



- Scalable up to 65535 IPC over 255 RSS
- Can Connect up to 10,000 Locations
- Recording Servers
- Up to 1000 Concurrent Users





# SAMAS

## KEY FEATURES

### User-Based Roles and Rights



- Monitoring Multiple Locations Centrally
- Mapped to Organization Structure and Hierarchy
- Quick Response Time
- Reduced Security Lapses

### Integrated Video Surveillance



- Single Platform for all Security Devices
- Supports Matrix and Third-Party IPC and NVRs
- Single Platform for Peripheral Security Devices
- API Integration with Matrix Access Control System



# SAMAS

## KEY FEATURES

### Command and Control



- Video Walls, Hierarchical E-map, Evidence Locks
- E-map to Navigate Buildings, Floors, and Camera
- Monitor Cameras and Sensors on The Premises
- Prompt Navigation, and Timely Notification

### Redundancy



- Failover Server Deployment at Critical Locations
- **Server Redundancy:** Deploy Multiple RSS
- **Network Redundancy:** Configure Multiple ISPs
- **Edge Recording:** Local Recording in Case of Network Failure

# SATATYA

## KEY FEATURES



### Optimize Bandwidth and Storage



- Configure Different Stream Profiles as per Usage
- Recording, Local, and Mobile View to Optimize Bandwidth
- Configure Different Profiles for Different Usage

### Enterprise Intelligent Video Analytics



- Motion and No-motion Detection
- Tripwire, Tampering, Intrusion, Tailgating
- Weighbridge, ANPR, and Parking Management
- Eliminates Human Lapses

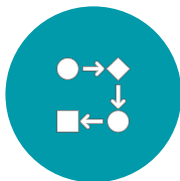
# SAMAS SOLUTIONS – Cognitive Response Engine with Automated Monitoring (CREAM)



Automates Routine  
Surveillance Workflow and  
Activities



Preventive Security with  
Consistent Response



Overcomes Human  
Constraints, Lapses, and  
Delays



Create Customized  
Scenarios with Input  
Triggers, Real-time Analysis,  
and Desired Responses

# SAMAS SOLUTIONS – VEHICLE TRACKING AND PARKING MANAGEMENT

- Automates Routine Functioning of Parking lots
- End-to-end Centralized Parking Management Solution
- License Plate Recognition, Prohibited Parking, Wrong way Parking, Unauthorized Parking, and more

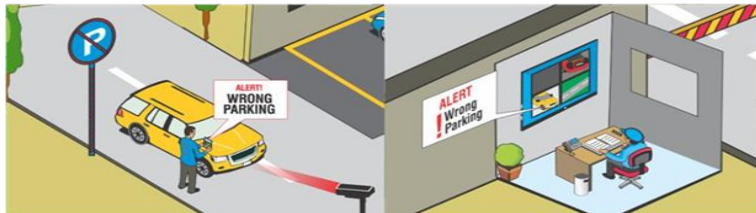
**Entry or Exit of Vehicles**



**Unauthorized Parking**



**No Parking**

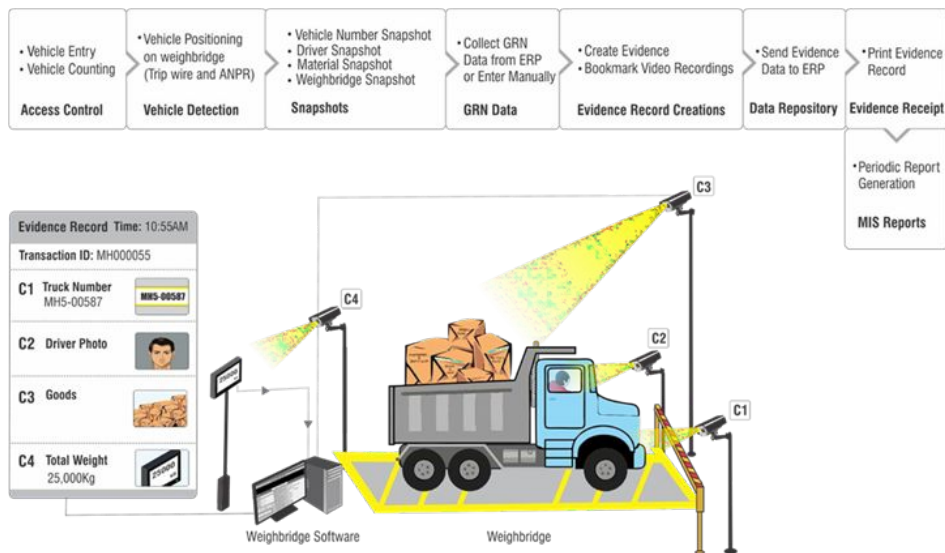


**Improper Parking**



# SAMAS SOLUTIONS – WEIGHBRIDGE INTEGRATION

- Pictorial Evidence of Inward and or Outward Vehicles
- Mapping License Plates, and Challan Numbers, for Verification
- Transparency in Weighment Solutions
- Seamless Integration with ERP through API





# CUSTOMER STORIES

# SUCCESS STORIES: IDP EDUCATION LTD

## Challenge:

- Real-time Images
- Validation of Candidates
- Image Capturing
- Centralized Monitoring

## Solution Offered:

- Video Management System (SAMAS)
- PTZ Cameras

## Benefits:

- Clear Visibility and
- Address Alerts Quickly
- Evidence Guarantee
- Ease of Management

## Matrix Offering:

- SAMAS with 70 User License
- 66 Cameras



# SUCCESS STORIES: LENSKART PVT LTD

## Challenge:

- Centralized Monitoring and Control
- Storage for More No. of Days
- High Storage Costs

## Solution Offered:

- IP Cameras
- Network Video Recorders (NVR)

## Benefits:

- Prevention of Retail Crime: Shoplifting, Vandalism
- Enhanced Security and Compliance
- Centralized Control

## Matrix Offering:

- IP Cameras: 200+
- Recording Devices: 50+

# SUCCESS STORIES: JAMMU AND KASHMIR POLICE

## Challenge:

- Need for Centralized Monitoring
- Local Recording of Footage
- Surveillance on the Go

## Solution Offered:

- 5MP Cameras FL and MVL,
- 2MP PTZ Camera with 33x Optical Zoom
- NVR
- VMS

## Benefits:

- Centralized Access from Commissioner's Office
- Local Recording of Footage
- Access and Notifications on Mobile

## Matrix Offering:

- 8 Channel NVRs – 13 Nos
- 5MP Fixed Lens Cameras – 27 Nos
- 5MP MVL Cameras – 6 Nos
- 2MP PTZ Cameras with 33x Optical Zoom
- VMS

# SATATYA CUSTOMERS

## **BFSI**

- Vaijapur Merchant Bank
- Commercial Bank of Congo
- National Health Insurance Fund – Tanzania

## **Construction**

- Rustomjee Crown Project
- Panchsil Group
- Prestige Jindal City
- Infocare Tower
- Bhartiyar City
- Branded Residences Project
- RRVP Bangalore
- L&T Construction – Commnet

## **Education**

- IDP Education India Pvt. Ltd
- Global Academy
- CHH. Shahu College of Engineering
- TATA Institute of Fundamental Research (TIFR)
- Chikkaballapur Medical College

## **Government**

- The Gujarat Cancer and Research Institute
- Western Central Railways
- Genova Piazza Principe Railway Station - Italy

## **Hospitals and Healthcare**

- Krsnaa Diagnostics
- TATA Memorial Centre
- Nanavati Hospital Max

## **IT/ITES, Retail**

- Lenskart
- Bluebirch
- BioSense Institute - Serbia
- AL Adrek

# Who We Are



**1M+**  
Customers



**4K+**  
Partners



**50+**  
Countries



**24\*7**  
Support



**40+**  
Awards



Stay Tuned & Subscribe



@Matrix Comsec



MatrixComSec



@Matrix\_ComSec



@MatrixComSec



Matrix\_Comsec

THANK YOU!



[www.MatrixComSec.com](http://www.MatrixComSec.com)